

TITANICBELFAST.COM/EDUCATION



TITANIC BELFAST'S

# TEACHER'S GUIDE



**TITANIC  
BELFAST**

# WELCOME TO TITANIC BELFAST

**THANK YOU FOR YOUR BOOKING.  
THIS TEACHER'S GUIDE WILL HELP  
YOU PLAN YOUR VISIT AND ENSURE  
YOUR PUPILS GET THE MOST OUT OF  
THEIR TIME AT TITANIC BELFAST.**

## TEACHER PRE-VISIT

Titanic Belfast's Learning Team offers free recces for all teachers considering or planning a visit to Titanic Belfast. Come and visit the Titanic Experience in a whistle stop walkthrough with a member of the Learning Team and then enjoy a coffee with the chance to ask questions about your options. You'll then return to the Titanic Experience with a complimentary ticket to take it all in at your own pace with your camera and notebook in hand. Recces are available Monday to Friday by arrangement. Contact [education@titanicbelfast.com](mailto:education@titanicbelfast.com) to book your recce.

## WORKSHOPS

Workshops take place either in our dedicated Education Suite in the main building or across the road in the Engine Room on board Titanic's sister ship the SS Nomadic, a 5 minute walk from Titanic Belfast.

## ACCESS

Titanic Belfast is a fully accessible building and welcomes anyone with access needs. If any of your party has specific needs, please discuss these with us in advance. A sensory guide is available for pre-visit info for pupils with SEN. See more at [titanicbelfast.com/accessibility](http://titanicbelfast.com/accessibility)

## TIMING YOUR VISIT

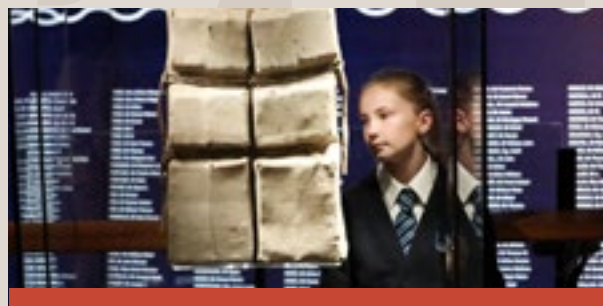
We operate seasonal opening hours, which can be found at [titanicbelfast.com/visitorinfo](http://titanicbelfast.com/visitorinfo). A guided tour lasts approximately 90 mins and although a self-guided tour is entirely at your own pace, we recommend approximately 90 mins for the Titanic Experience and 60 mins for our workshops.

## LUNCHES

Titanic Belfast can provide a lunch area for your school group. This must be requested at time of booking and is subject to availability. Schools will be accommodated on a first come, first served basis. Alternatively, the plaza surrounding Titanic Belfast and the Titanic Slipways have a number of picnic tables and benches which can be used for students to take lunch, however pupils will need to be supervised at all times.

Titanic Belfast has a small number of packed lunch sandwich options available for pre-order. Please note we require a minimum of seven days' notice to facilitate this.

# BOOKING A VISIT



## HOW TO BOOK

Please complete and return the booking form as soon as possible.

Please open the form, fill in the required fields, save it and then send it as an email attachment to [education@titanicbelfast.com](mailto:education@titanicbelfast.com)

We will review your request, check availability, and then confirm your booking.

## PLEASE NOTE

- We require a minimum of 14 days' notice to process education group booking requests.
- Please be aware if a booking form is not completed in full there may be a delay in processing your request.
- A group booking request does not reflect an official booking until you have received a receipt.

For health and safety reasons, larger groups will be split across time slots. You will be notified of these slots at the point of booking.

## COMPULSORY RATIOS

Titanic Belfast requires a minimum of 2 supervising adults with each group, excluding 1:1 carers.

- Children under 8 years: 1:10 (or part thereof)
- Children 8-18 years: 1:15 (or part thereof)
- Children with special educational needs or access requirements can avail of free carer ticket: 1:1

Number of students	Number of compulsory adults
15-30	2
31-60	4
60-90	6
90-120	6

*Excludes 1:1 carers*

NB: If these ratios are not met, we reserve the right to refuse entry for health and safety reasons.

Students must be supervised by their responsible adult at all times. More information about conduct and supervision can be found in our 'conduct' section.

# WHAT TO EXPECT ON THE DAY

## ON ARRIVAL AT TITANIC BELFAST

Please advise your coach driver to drop off at the west doors and then park in the East Yard.

A member of our crew will greet you and then once inside the atrium your leader should check in at our Groups Desk. Here you should receive your lanyards\*, wristbands, a copy of our guidelines, and instructions on where to store your bags. You should then be ready to receive your welcome.

## SAMPLE ITINERARY

<b>10.00</b>	Welcome orientation
<b>10.20</b>	Guided tour of The Titanic Experience
<b>12.00</b>	Lunch in the Education Suite
<b>12.30</b>	Get The Message workshop
<b>13.30</b>	Visit the Titanic Store
<b>14.00</b>	Depart

## TOILETS

We have a large number of toilets located on level -1 and level 1, immediately before your entry to the Titanic Experience. We also have a number of accessible toilets at all levels and toilets throughout the Titanic Experience itself.

## SELF-GUIDED RESOURCES

If you would like activity sheets to support your trip, please visit [titanicbelfast.com/education](http://titanicbelfast.com/education) to see our range of resources.

## TITANIC EXPERIENCE EXIT

Once you have finished within the experience you will find yourself back on level 1. From here you can return to the atrium via the escalator on your right.

## TITANIC STORE

We have a range of items including stationary, magnets and postcards on offer. Students should be supervised at all times. We ask that a maximum of 15 students enter the shop at any one time.

## CHECK OUT

At the end of your visit, we kindly ask that you check out with a member of our crew over at the groups desk, return your lanyards\* and collect any baggage you may have stored with us.

---

**\*Lanyards should be returned to the Groups Desk at the end of your visit.**

# THE TITANIC EXPERIENCE



## BOOMTOWN BELFAST

Suggested time

5–10 mins

Explore Belfast's booming industries and see why Titanic was built in the thriving city, try your hand at communicating with the Marconi device, like the one used on Titanic and witness the conversation between James (the butler) and his colleague.

- Stages of linen production
- Marconi device
- Emigration suitcase interactives
- Model of Thompson dry dock
- *Artefact: Harland & Wolff clock*
- 19th century gates from Harland & Wolff



## THE DRAWING OFFICES AND THE SHIPYARD

5 mins

Explore the blueprints of Titanic and test your skills on the interactive floor, look at the scale of the Arrol Gantry and imagine working at those heights.

- Large photograph showing the working Drawing Office
- *Artefact: Shipyards salaries notebook showing Thomas Andrews salary*
- Interactive model of Arrol gantry
- Arrol Gantry (quarter size of the original)



## SHIPYARD RIDE

5 mins (allow queuing time during busy periods)

Experience the shipyard through the eyes of the men who worked in it. Our staff are available to help visitors – an accessible car is available. The information presented on the ride is also available in the interactive zone if visitors wish to skip the ride.

- Shipyards interactive zone (after ride)

# THE TITANIC EXPERIENCE



## THE LAUNCH

Suggested time

5 mins

Transport yourself to 12.13pm on 31st May 1911 to the site where Titanic was built, soak up the atmosphere and hear the intake of breath as Titanic launches into the water. Imagine the historic slipway and dock in a bygone era with the 3D model and floor map.

- **Artefact: Ticket for launch**
- **Artefact: Engraved rivet**
- **Artefact: Shipyard worker's time board**
- **3D model and floor map**
- **Artefact: Lord Pirrie's gold pocket watch**
- **View of slipways and plaza**



## THE FIT-OUT

10 mins

Explore the ship from the boiler room to the staircase and up to the bridge on the 3D tour, get to know the passenger quarters of Titanic, discover the cabins, the fabrics, the crockery and listen to the music of Wallace Hartley's band as the passengers would have enjoyed it.

- **3D Titanic model (before & after fit-out)**
- **Life-size First, Second and Third Class cabins**
- **3D video cave**
- **Artefact: White Star china**



## THE MAIDEN VOYAGE

5 mins

Follow Titanic's route, meet some of the ship's characters and see what life was like on board through Father Browne's images, walk on deck and hold the rail to feel the vibrations of the ship as she crosses the Atlantic. Meet our First Class Steward, preparing for his next service in the elegant Palm Court Café.

- **Father Browne's photos onboard the Titanic**
- **Artefact: Brownie Box camera**
- **Infographic video**
- **Artefact: Doctor Simpson's letter**
- **Artefact: Hart family letter -note Eva's handwriting**
- **Artefact: First Class menu**

# THE TITANIC EXPERIENCE



## THE SINKING

Suggested time  
5 mins

Take yourself to 11.40pm on 14th 1912 when Titanic hit the iceberg. Feel the atmosphere change as the darkness falls, listen to survivor stories and 'read all about it' in the world's media. The wall of names shows all the passengers onboard Titanic on that fateful night, detailing if they were lost or saved.

- Morse code and 'testimonies of survivors' audio
- Transcripts of messages sent between ships
- Interactive screens with passenger information and news articles
- Artefact: 1 of the 12 remaining Titanic life jackets
- Wall of passenger and crew names



## NEVER AGAIN

10 mins

Explore the chain reaction of events which caused Titanic to sink, and the measures put in place to prevent a tragedy like it from happening again, through our large tumbling dominos. One in particular was the missing binocular box keys which limited the vision of the lookout on the crow's nest.

- Dominoes showing key events and safety measures now in place
- Artefact: Original binocular keys
- Witness testimonies from enquiries



## BALLARD'S QUEST

5–10 mins

Follow the story of Dr Robert Ballard's quest to fulfil his lifelong dream to discover the wreck of Titanic. Learn about his Top-Secret US Navy mission that led him to search for Titanic, his challenges and solutions for covering such a large area and witness the moment the team shout 'It's a boiler!'.

- Seating for reflection and discussion
- Titanic model ship
- Interactive 'pods'
- Daily exploration TV footage
- Discovery footage on walls
- Model of Argo ROV

# THE TITANIC EXPERIENCE



## THE SHIP OF DREAMS

Suggested time  
15 mins

Embark on a reflective journey of the hopes and dreams of those impacted by the famous ship through the floor to ceiling projections of the dreams of the people who built her, those who sailed on her and those who were heading to New York to start a new life.

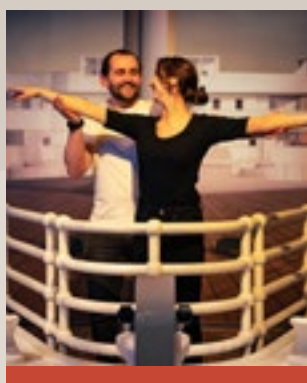
A fully immersive experience with the projections programmed in sync with a fully lit centrepiece scale model of the ship which transforms with each dream, accompanied by a bespoke music score.

Discover our collection of original Titanic artefacts on display at the bottom of the staircase.

- **8 minute video presentation**
- **Fully lit scale model Titanic**  
*Ask pupils to stop on middle level of stairs to watch the video before walking down to the Glass Floor*
- **Glass floor with Titanic wreckage projected underneath**

### Artefacts:

- **Wallace Hartley's violin and letters**
- **A sheepskin coat worn by Titanic Stewardess Mabel Bennett**
- **First Class passenger Ella White's black-enamelled walking cane**
- **A Titanic deckchair**
- **Plan of Straus family's First Class accommodation**
- **Original photos of Titanic's launch**
- **Malcolm Joakim Johnson's pocket watch, photo and ticket**



## THE LASTING LEGACY

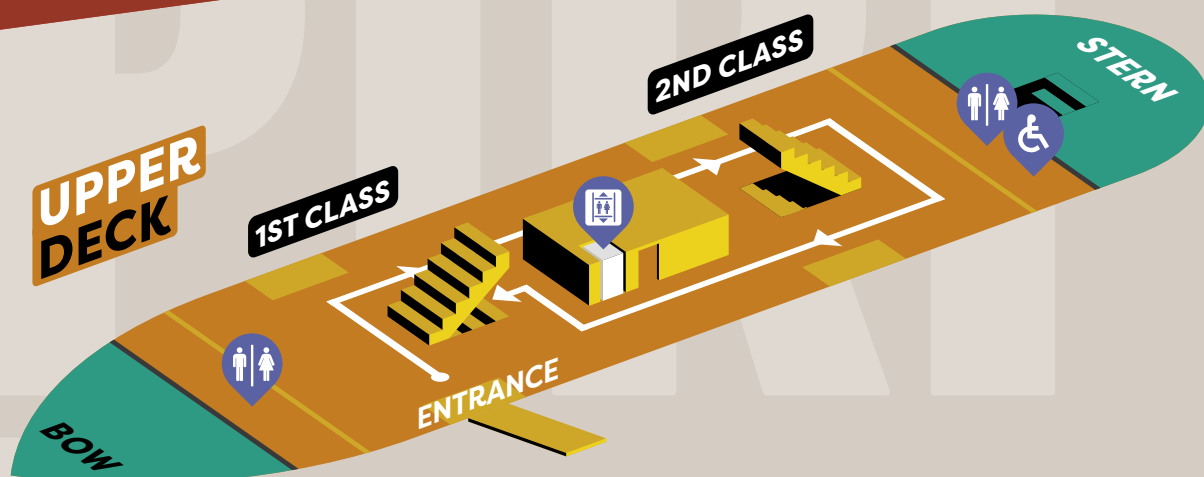
5 mins

Enter modern times to see how the significance of the Titanic story has impacted Belfast and captured the world's imagination through film, theatre and literature. Test your knowledge through our interactive quiz and strike a pose to capture your Jack and Rose moment on the bow of the ship.

- **Titanic memorabilia from film, theatre and literature**
- **Interactive quiz**
- **'Bow of ship' photo opportunity**



# SS NOMADIC



## DOCKSIDE

5 mins

- Caisson (engineering tool to empty and fill the dry dock)
- Graving dock - great photo op!

## 1ST CLASS UPPER

5 mins

- Model of tenders SS Nomadic and SS Traffic
- Ladies Powder Room
- Staircase
- Panelling -look for the Flax flower & nod to linen industry in Belfast
- Floor tiles
- Bar-ring bell for waiter [2]
- Portholes

## LUGGAGE CORRIDOR STARBOARD

3 mins

- Interactives about passengers
- Suitcases -note the Pomeranian in the wicker basket and the Polar bear sitting on the case of passenger Robert Douglas Spedden

## 2ND CLASS UPPER

2 mins

- Period costumes
- Information about distinguished passengers
- Hopscotch
- Toilets

## LUGGAGE CORRIDOR PORT

2 mins

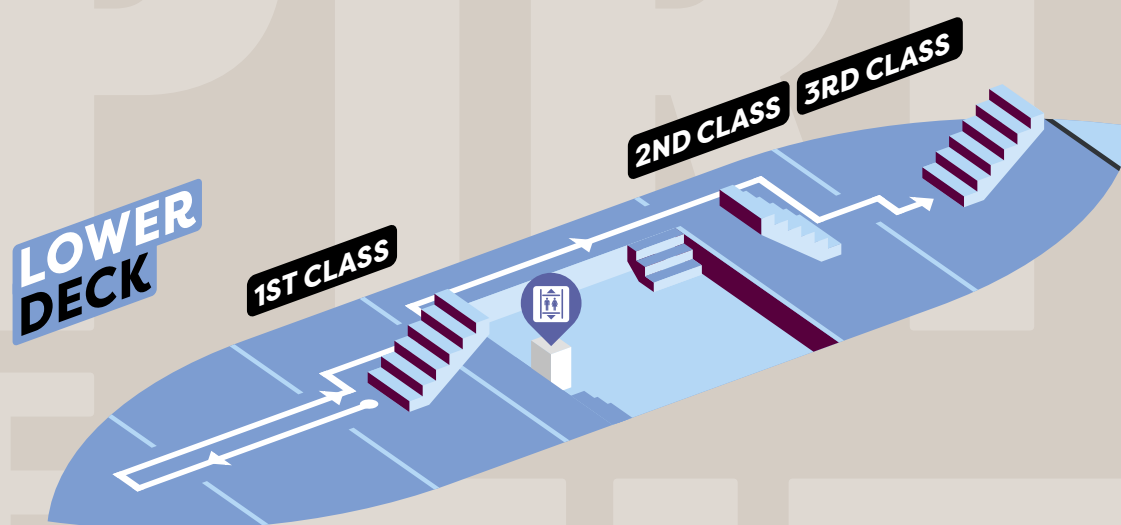
- Artefacts case - note the original floor tile, White Star Line linen and postcards

## BOILER ROOM

3 mins

- Animated projection of boiler room stoker
- Funnel above

# SS NOMADIC



## CARGO QUARTERS/CREW SPACE

10 mins

- Try on a lifejacket
- Would you fit in the crew tunnels test?
- Model of Cherbourg port
- Poster puzzle
- Port of Cherbourg computer game
- Build the Nomadic
- Fact cards
- Stairs to Crew Space with replica furniture and items

## ENGINE ROOM

- Video presentation on the history of SS Nomadic
- Hatches showing propeller shafts

## 2ND CLASS LOWER

2 mins

- Video presentation of returning the SS Nomadic to Belfast
- Information on the ship's life as a restaurant

## LUGGAGE SPACE

2 mins

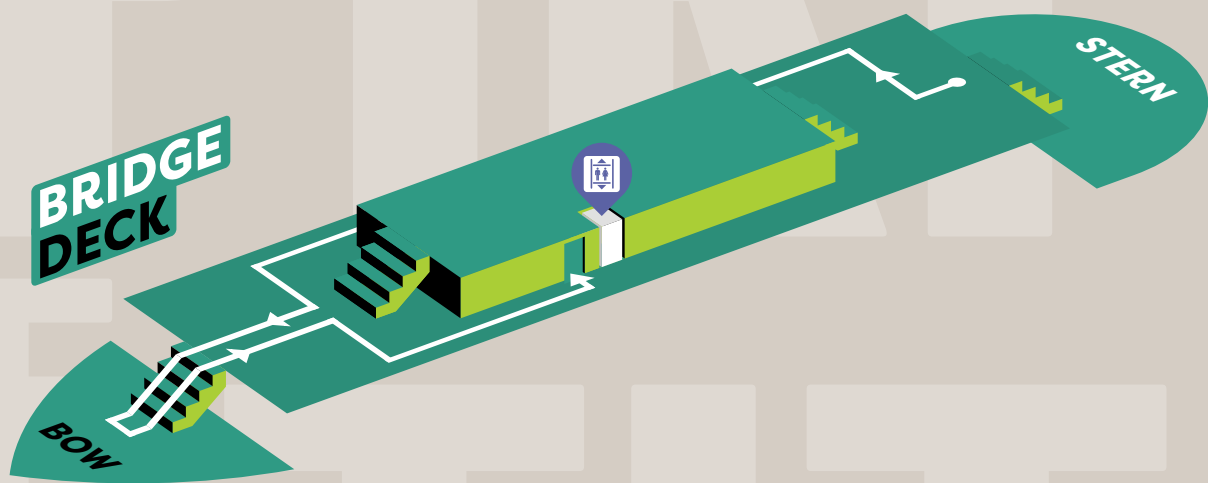
- Banners detailing people's reflections of the SS Nomadic
- Cut away to steering gear

## CAPTAIN'S CABIN

2 mins

- Animated projection of Captain Boitard

# SS NOMADIC



## DECKS

10 mins

- Bridge deck
- Forecastle
- Flying bridge deck
- Ship's wheel - great photo op!
- Poop deck to rear - great photo op with French flag!

# SELF-GUIDED SLIPWAY WALKS

The plaza surrounding Titanic Belfast and the Titanic Slipways are laden with hidden symbolism just waiting to be discovered!

**A**

As you walk out of the Titanic Belfast building by the north door you will see ahead of you and to your left the map of GB and Ireland that makes up part of the northern hemisphere map surrounding the plaza. Escort your pupils to the benches just beyond this part of the map and get them to turn around to face the building.

You may need to assist them in understanding the nature of the map in front of them and you may have to refer back to any work done in your classroom about maps and plans. It usually helps to point out that the land is the grey tiles and the sea is the cream tiles.

Walk and talk the children through the route that Titanic took, stage by stage. You may wish to use one or more of your pupils to bring this to life. For example;

- Child 1 is the 'delivery crew' bringing Titanic from Belfast to Southampton. Point out Liverpool as they pass by its marker plaque and talk about why Liverpool is labelled when Titanic never visited it. *Liverpool was the headquarters of the White Star line and Titanic was registered there which is why 'Liverpool' is written on Titanic's hull under her name.*

- At Southampton, Child 1 'disembarks' and Child 2 boards. Child 2 is the crew and some passengers who boarded at Southampton. Child 2 carries on to Cherbourg.
- At Cherbourg, Child 2 'disembarks' and Child 3 boards. Child 3 is the wealthy passengers who are heading home after their European Tour. Child 3 continues on to Cobh (Queenstown) where they disembark and Child 4 boards. Child 4 is the Irish Immigrants heading to America for a new life. Child 4 now leads the whole class along the route to the wreck site.

At the wreck site look at how the route line changes. Talk about what this might mean. Try to steer the class towards the idea that the broken line is where Titanic should have gone next but also the route that Carpathia took to New York with the survivors. Follow on to New York and, if you wish to, look also at Halifax where many of the Titanic graves are situated.

# SELF-GUIDED SLIPWAY WALKS

**B**

Stand your pupils as far under the hull of Titanic Belfast as you can while still keeping them a safe distance away from the reflective pools around the building. Ask the children to look down at the water under the hulls and then to quickly raise their eyes up the height of the hull to its very top. This will give them a strong impression of the height of the building. Tell them that the hulls of Titanic Belfast are the same height as Titanic was on her launch day but that she got taller still before she was completely finished because they still had to put on her big funnels.

**C**

Walk the children to the outline of Olympic and Britannic that is marked on the plaza and slipways with a blue strip light. Arrange them around the 'bow' so they can all look down the length of the 'ship' to the 'stern'.

Walk your class down the length of this 'ship' making them aware as you go about the trip and fall hazards; steps, tramlines, rough ground, change of surface etc.

**D**

When you get to the 'stern' of the ship arrange your class along the handrail and get them to imagine that they are leaving Cobh and Ireland behind them. Get them to wave goodbye to their friends, their families and all they have ever known as they set off on a journey to their new home.

**E**

As you walk your class back up the length of the 'Titanic' side of the slipways, encourage them to imagine that they are 1st Class passengers out for a walk on their promenade deck with their wealthy friends. Ask them to think about the conversations they would be having, the clothes they would be wearing etc.

# SELF-GUIDED SLIPWAY WALKS

- 1** Titanic slipway
- 2** Promenade deck
- 3** Olympic slipway
- 4** Memorial Garden
- 5** Memorial
- 6** Map of Northern Hemisphere
- 7** Harland & Wolff drawing offices
- 8** Titanic sign
- 9** Titanica





# CONDUCT

## STUDENT CONDUCT

1. Students must remain under the supervision of their adult leaders throughout the Titanic Experience. This means that the group moves through the experience together and ensures that no students are left behind.

This also applies if you leave the building to explore the Titanic slipways or the plaza.

2. We expect young people visiting our experience to treat each other and all other visitors with respect. We want everyone who visits Titanic Belfast to enjoy their time with us, therefore we will not tolerate students running, shouting, or pushing while on site.
3. Your Welcome Host will have a health and safety message for your group. Please ensure that all students listen to this and encourage them to behave safely throughout their visit.
4. You are welcome to take photos in the Titanic Experience, but please do not use video. Please ensure that everyone has turned off their flash as flash photography can be a health risk for some guests.
5. When on the Shipyard Ride there are a few simple rules for our guests to follow; stay seated, don't lean out and keep your hands inside the car. We would also ask that students stay quiet during the ride so that everyone can hear the ride commentary. You **MUST NOT** lift the lap bar on your ride car until a member of our staff tells you to do so. Failure to follow this instruction will cause a ride stoppage and your entire group may be asked to leave the experience immediately.



6. Eating and drinking is not permitted inside the Titanic Experience.
7. The Galley Café and Pantry Restaurant do not have the capacity to facilitate groups or group lunches. We do have several picnic benches outside on the plaza that groups are welcome to use.

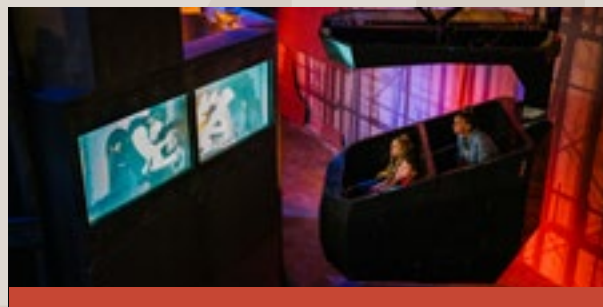
## KEY INFORMATION FOR TEACHERS:

### Ratios:

- Children under 8 years: 1:10 (or part thereof).
- Children 8-18 years: 1:15 (or part thereof).
- Children with special needs or access requirements: 1:1 (can avail of free carer ticket).
- Titanic Belfast requires **minimum of 2 supervising adults** with each group, excluding 1:1 carers.
- Large groups will be split into groups of maximum 35 pupils entering 20 minutes apart. You will be notified of these slots at the point of booking and must adhere to these for safeguarding and health and safety reasons. Each sub-group **will require 2 leaders each** and this will have been confirmed at the point of booking.



# CONDUCT



## SUPERVISION

- Leaders are responsible for the safety and conduct of those in their party throughout their visit. However, if you need help, please alert a member of our staff.
- All pupils must **always** remain under the supervision of their adult leaders. Supervision in toilet areas is essential.

Please read *Titanic Belfast Child Protection Policy* and *School Safety Charter* which can be found on our website.

## ARRIVALS

- You should arrive at least 10 minutes prior to your scheduled start time. If you have arrived outside your timeslot, we cannot guarantee immediate entrance. If you are running late, please call **028 9076 6364** to let us know.
- Coaches must use the designated coach drop-off point on the west side of the building.

**Backpacks and rucksacks** cannot be accommodated in the Titanic Experience. All personal belongings are brought into the building at the owner's risk.

- Visitors are reminded that on occasion parts of the experience may be closed for maintenance or for technical reasons. **Tickets will not be refunded** and no compensation will be paid in the event of such closures.

## SHIPYARD RIDE

- Ensure that an adult is in your party's first car of the ride and that an adult remains until the last car is departing.
- Minimum height 115cm.
- Please enforce the Shipyard Ride safety regulations with your students.

## TITANIC STORE & FACILITIES

- Titanic Store requires that there be **maximum 15 students** in the store at any one time.
- Students in the store must always have adult supervision.
- The Atrium food outlets and other visitor spaces within the building are not suitable for groups and cannot be used.

---

**We reserve the right to remove groups from the Titanic Experience if these guidelines are not adhered to.**

# FAQS

## WHAT INFORMATION DO I NEED TO MAKE A BOOKING?

Please complete our booking form at [titanicbelfast.com/schoolvisits](http://titanicbelfast.com/schoolvisits)

## HOW MUCH IS A VISIT AND HOW CAN I PAY?

Please see our booking form for tour and workshop pricing. Payment will be arranged on confirmation of booking.

## WHAT TOURS ARE AVAILABLE?

We offer a number of guided tours specifically for education groups. These are subject to availability and run October to April.

Our self-guided tours are available to book throughout the academic year.

## DO I NEED A GUIDE?

No, the Titanic Experience is highly interactive and tells the story of Titanic from her beginnings in Belfast to the discovery of the wreck, and can be enjoyed as a self-guided tour. Teachers are welcome to arrange a free recce before their visit (Monday-Friday) to support in the planning of their trip. Guided tours can be booked for school visits (subject to availability) - we recommend these for Key Stage 2 groups.

## DO WE NEED AUDIO GUIDES?

No, audio guides are not necessary to enjoy the experience.

## HOW LONG SHOULD WE PLAN FOR A VISIT?

Our guided tours are 90 minutes long. While there are no time constraints on a self-guided visit, as this takes place entirely at your own pace, we would recommend approximately 90 minutes for a school group. Workshops are 60 minutes long.

## HOW DO I ENSURE A SMOOTH AND ENJOYABLE VISIT?

For a successful visit, please ensure you have read this guide thoroughly. A copy of our risk assessment is available on our website and can be used to inform your own. Teachers are very welcome to arrange a free recce in advance of their visit.

## HOW CAN I ENHANCE OUR VISIT?

Why not book one of our curriculum-rich workshops to complement your tour? We also recommend exploring the slipways and the Maritime Mile.

## WHAT IS THE ADULT TO CHILD RATIO?

1:15 for children ages 8-18

1:10 for children under 8

## CAN YOU HELP ME WITH MY RISK ASSESSMENT?

You will find a copy of our risk assessment on the website, which you can use to inform your own risk assessment.

## WHAT DO WE DO IF WE'RE RUNNING LATE?

Please phone us on **028 9076 6364** to let us know.

# FAQS

## WHAT DO I DO WHEN WE ARRIVE?

Please send your leader to the Groups Desk where you will collect your lanyards and wristbands.

## WHAT STORAGE OPTIONS ARE AVAILABLE FOR OUR BAGS?

We have a select number of storage boxes for packed lunches. These will be stored in a cool (though not refrigerated) area. Unfortunately, we do not have the facilities to store backpacks and larger bags.

## WHAT TOILET FACILITIES DO YOU HAVE?

We have a large number of toilets located on level -1 and level 1, immediately before your entry to the Titanic Experience. We also have a number of accessible toilets throughout the experience itself.

## WHAT SHOULD WE DO FOR LUNCH?

We can offer a lunch space inside our building, subject to availability. This will be allocated on a first come first served basis and should be mentioned at the point of booking. We have a number of picnic benches which you are welcome to use, weather permitting. If you would like to order food in advance, we have a small number of sandwich options available for pre-order. We require seven days' notice to facilitate this.

## WHAT HAPPENS IN AN EMERGENCY?

In the case of an emergency the alarm will sound and instructions will be given to make your way to the nearest emergency exit. Follow the instructions of our staff at all times.

## IS YOUR BUILDING FULLY ACCESSIBLE?

We're proud to be consistently recognised as industry leaders on a local, national, and international level for our accessibility standards. As recognised ambassadors, we are continually working to further develop our five-star customer service by ensuring that all of our visitors' access requirements are not only fully met but exceeded. See more at [titanicbelfast.com/accessibility](https://titanicbelfast.com/accessibility)

## DO YOU HAVE PROVISION FOR SEN GROUPS?

Yes. We welcome and provision for groups with special educational needs and would be very happy to discuss your specific requirements further. Please contact [education@titanicbelfast.com](mailto:education@titanicbelfast.com)

## WHERE SHOULD THE COACH PARK?

Coaches should drop off groups at the designated drop off zone by the west doors. Coaches should then park in the East Yard.

## DO I NEED TO SUPERVISE THE STUDENTS?

Yes. Students need to be supervised at all times including in our shop and on the slipways. Titanic Belfast has a compulsory teacher to student ratio of 1:15 (1:10 for KS1 groups) and a minimum of two responsible adults per group, excluding 1:1 carers.

## DO YOU HAVE A GIFT SHOP?

Yes. Students are very welcome to use the Titanic Store. We have a range of items including stationary, magnets and postcards on offer. Students should be supervised at all times. Please note we ask that a maximum of 15 students enter the shop at any one time.

# HOW TO GET HERE

## BY CAR

Vehicles approaching Belfast on the M1 or M2 should follow the signs to Belfast City Airport M3, taking the first exit for Titanic Quarter.

## BY TRAIN

Translink operate regular train services from Belfast City Centre and beyond. Please disembark at Titanic Quarter Station for Titanic Belfast. From here there is pedestrian access via a footbridge, please then follow signage to Titanic Belfast. Walking time is approx. 15 mins from station.

## BY BUS

Translink operate Metro Services from Belfast City Centre, departing outside the Belfast Welcome Centre to Titanic Belfast. The Belfast Glider connects East and West Belfast and Titanic Quarter with the city centre. There is a Titanic halt outside Titanic Belfast.

## BY COACH

We offer free coach parking and refreshments for your driver for pre-booked groups. Please ensure that drivers drop off and collect from the **WEST DOORS** in the designated coach zone. All coaches should then park in the East Yard, just off the main Queen's Road, see below.

